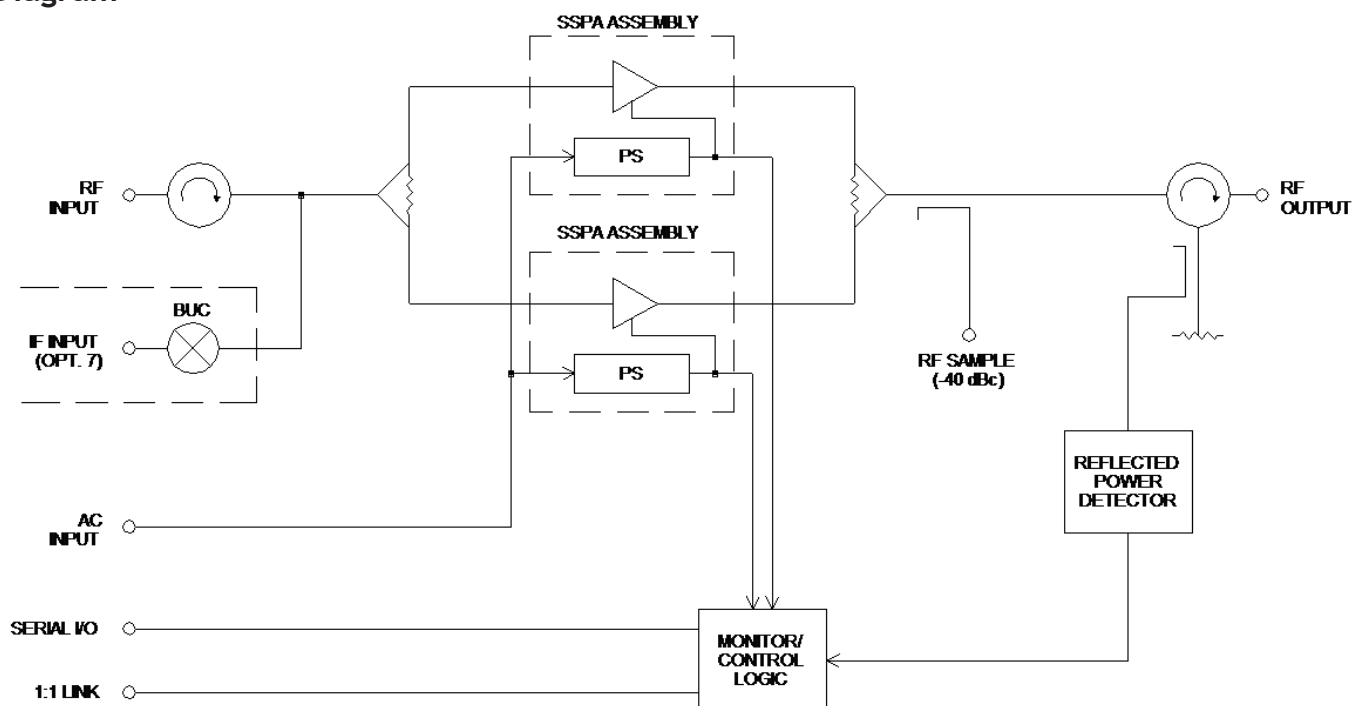


# DPCD, DPCM6400N C-Band Solid State Power Amplifiers

Using technology developed for ModuMAX™ amplifiers, these outdoor SSPAs feature a modular architecture with field-replaceable RF assemblies and offer an output power of 400 Watts across the standard 5.850- 6.425 GHz or extended 5.850- 6.725 GHz satellite uplink bands.

Housed in a weatherproof NEMA 4X enclosure, the amplifiers can be mounted in an antenna hub or outdoors in applications where it is desirable to reduce cable losses by mounting the SSPA close to the antenna. Built for reliable, trouble-free service, the amplifiers incorporate a microprocessor-based monitor and control system.

## Block Diagram



## FEATURES:

- Field replaceable RF assembly
- 400 W saturated output power
- Microprocessor based monitor and control
- Serial interface (RS-232/-422/-485)
- Output isolator for high load VSWR protection
- 20 dB range digital gain adjustment
- RF output sample port
- External mute input
- Reflected power monitoring

## APPLICATIONS:

- Stand-alone SSPA
- 1:1 and 1:2 redundant systems
- Commercial, Government and Military systems

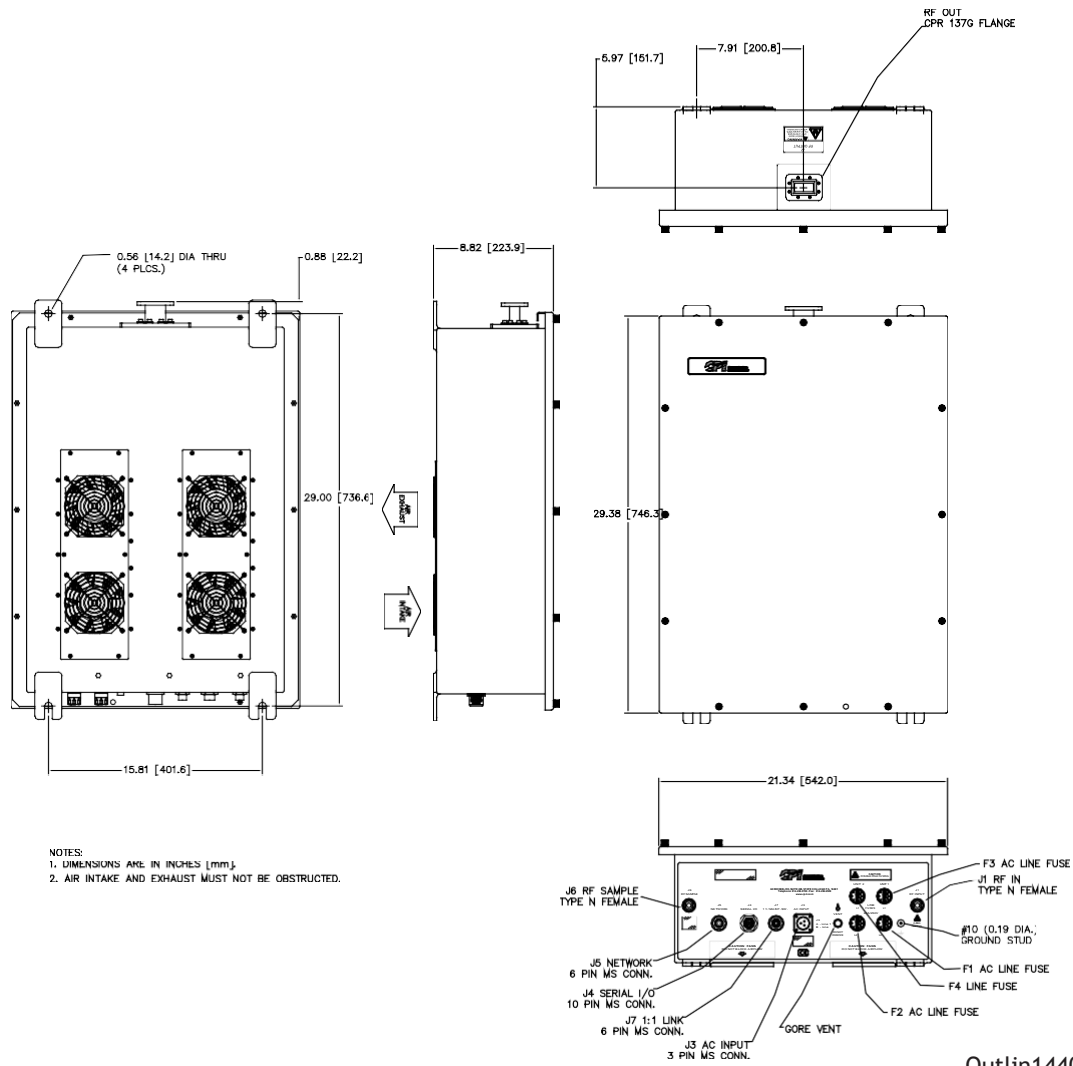
## OPTIONS:

- Block upconverter

Parameter	Notes	Specification
Frequency Range	Band "D" Band "M"	5.850 to 6.425 GHz 5.850 to 6.725 GHz
Input Frequency Range with Option 7, Block Upconverter	Band "D" Band "M"	950 MHz min., 1525 MHz max. 950 MHz min., 1825 MHz max.
Gain, at Maximum Gain Setting		70 dB min., 73 dB typical standard 70 dB min., 75 dB typical with Option 7
Gain Adjustment Range		20 dB min.
Gain Flatness		±1.0 dB over the full band, standard; ±2.0 dB full band, with Option 7 ±0.3 dB per 40 MHz, standard, ±0.5 dB per 40 MHz, with Option 7
Gain Stability vs Temperature	-40 to +50°C, standard -40 to +50°C, with Option 7	±1.0 dB typical, ±1.5 dB max. ±2.0 dB typical, ±2.5 dB max.
Saturated Power Output		+56 dBm typ. (400 W)
Power Output at 1dB compression (P <sub>1dB</sub> )		+55.2 dBm min. (320 W)
Two Tone Intermodulation		-25 dBc max., -30 dBc typical at 3 dB total backoff from 1dB compression point
Group Delay	Linear Parabolic Ripple	0.03 ns/MHz 0.003 ns/MHz <sup>2</sup> 1.0 ns peak to peak
AM/PM Conversion		1.0°/dB typical, 2.0°/dB max. at (P <sub>1dB</sub> )
Noise Figure		10 dB typical at maximum gain, standard 15 dB typical at maximum gain, with Option 7
VSWR	Input, Standard Input, with Option 7 Output	1.25:1 typical, 1.30:1 max. 1.35:1 typical, 1.50:1 max. 1.20:1 typical, 1.30:1 max.
Output Sample Port		-40 dBc typical
Connectors	Input Output Sample Port Serial I/O 1:1 Link Power	Type N Female CPR137G Waveguide Type N Female 10-pos MS, mate supplied 6-pos MS, mate supplied 3-pos MS, mate supplied
Power Requirements	Voltage Frequency Power Power factor corrected	180 to 264 VAC 47 Hz min., 63 Hz max. 2000 W typical, 3200 W max. (1) 0.98 typical
Cooling System		Forced Air
Operating Temperature Range	Ambient air temperature	-40°C to +50°C
Dimensions	See outline drawing	29.38" H x 21.34" W x 8.82" D; 746 mm H x 542 mm W x 224 mm D
Weight		104 lb, 47 kg)

(1) Cold start at -40 °C and P<sub>OUT</sub> in saturation

Outline Drawing SSPA



NOTES:  
 1. DIMENSIONS ARE IN INCHES [mm].  
 2. AIR INTAKE AND EXHAUST MUST NOT BE OBSTRUCTED.

Outlin14408

Part Number Ordering Information

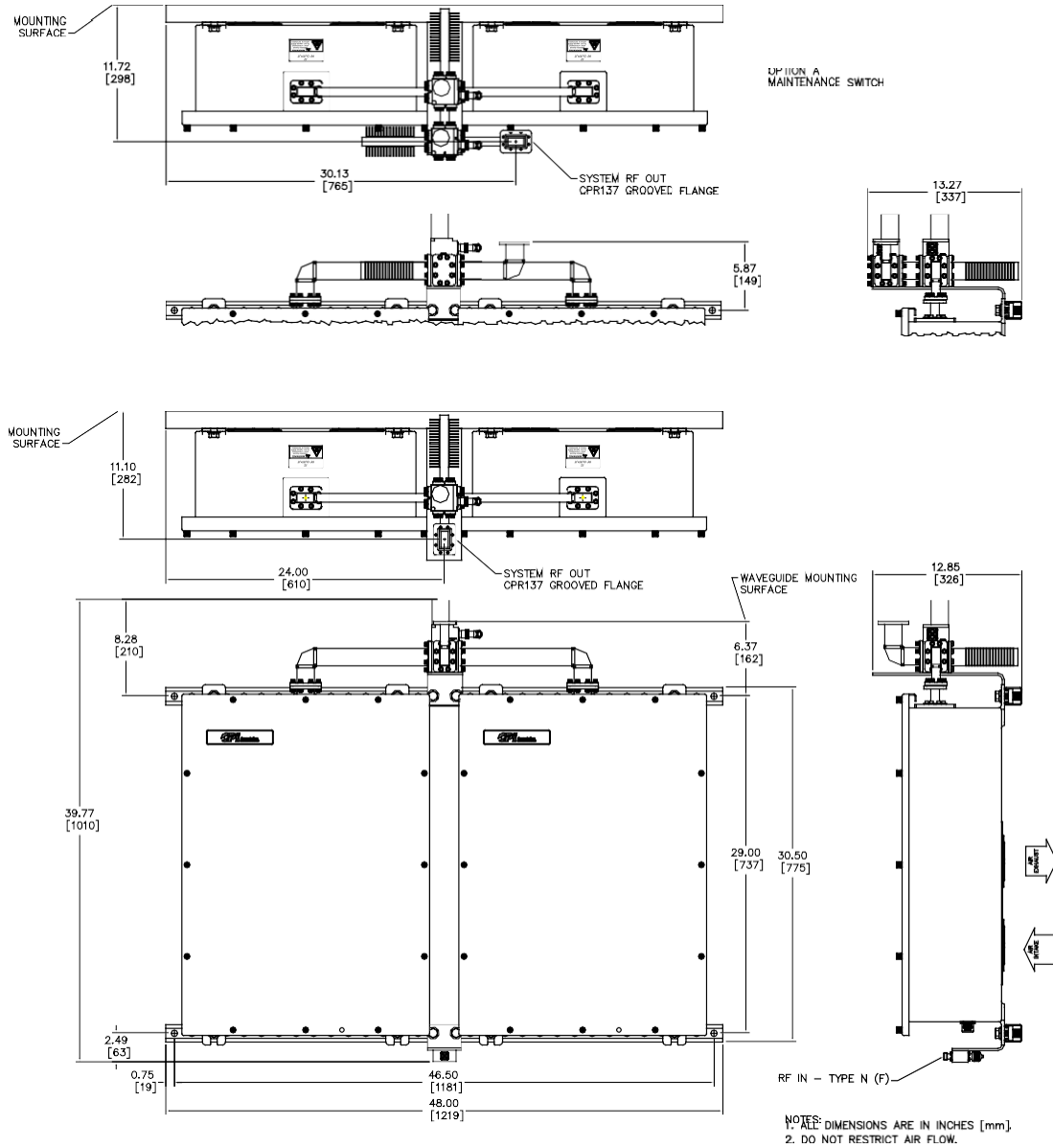
<p><b>SSPA:</b>                  Part/Model No. <b>DPC</b> <input type="checkbox"/> <b>6400N-X</b>                  5.850 - 6.425 GHz = D                  5.850 - 6.725 GHz = M  <b>Options</b>                  Block Upconverter ..... 7                  L-Band IF Input</p> <p>*Performance specifications of a redundant system depend on the installed configuration and optional accessories. Contact the factory for more information and for 1:2 system capabilities.</p>	<p><b>Redundant System Configuration: 1:1 switching assembly, two SSPAs and interconnecting cables</b>                  Part/Model No. <b>DPRC</b> <input type="checkbox"/> <b>1400N-XX</b>                  5.850 - 6.425 GHz = D                  5.850 - 6.725 GHz = M  <b>Options</b>                  Block Upconverter ..... 7                  L-Band IF Input                  Maintenance Switch ..... A                  Selects antenna or dummy load at system output</p>
---	---

Related Accessory:

**RCP-2001, SSPA Remote Control Panel**

1U-high rack-mount panel enables remote manual control of the SSPA. Can be located up to 1.3 km (4000 ft.) away and interconnects with inexpensive cable.

Typical 1:1 System Outline Drawing



Outline 19111

Connector Interface

Ref. Des.	Function	Connector Type	Mating Connector	Comment
J1	RF/IF Input	Type N Female	Type N Male	
J2	RF Output	CPR137G Waveguide	CPR137 Flange	
J3	AC In	3-pos MS, Male	3-pos MS, Female	Mate supplied
J4	Serial I/O	10-pos MS, Female	10-pos MS, Male	Mate supplied
J6	Output Sample	Type N Female	Type N Male	
J7	1:1 Link	6-pos MS, Female	6-pos MS, Male	Mate supplied

10880 Wilshire Blvd Los Angeles CA 90024 USA

Phone: +1.888.315.9545

Email: [contact@orbitalconnect.com](mailto:contact@orbitalconnect.com)

<https://store.orbitalconnect.com>

